

KRUGER GAME LODGES

3 Days / 2 Nights

Even safari veterans will say that to see animals from an open vehicle is very exciting, even more so for those experiencing it for the first time. Bordering and within world famous Kruger National Park are many luxurious game lodges on private game reserves. The ones listed below are some of the ones recommended to you for their quality, value for money and exceptional game viewing.

Prices per person from:	TWIN	SINGLE
Drifters Game Lodge (AI)	\$555	\$655
Makalali (AI)	\$760	\$1,250
Edeni		
• Edeni Bush (AI)	\$765	\$1,095
• Edeni Hoyo Hoyo (AI)	\$765	\$1,095
• Edeni River Lodge (AI)	\$1,075	\$2,130
Camp Shonga (AI)	\$885	\$1,480
Umlani (AI)	\$910	\$1,405
Honey Guide		
• Khoka Moya (FI)	\$920	\$1,105
• Mantobeni (FI)	\$920	\$1,105
Camp Shawu (AI)	\$930	\$1,550
Shishangeni (AI)	\$1,060	\$1,740
Kuname (AI)	\$1,080	\$1,685
Motswari (AI)	\$1,140	\$1,745
Idube (AI)	\$1,240	\$1,850
Hamiltons (AI)	\$1,440	\$2,340
Lukimbi (AI)	\$1,480	\$2,185
Ngala Tented Camp (AI)	\$1,490	\$1,650
Mala Mala Main Camp (AI)	\$1,495	\$2,200
Exeter River Lodge (AI)	\$1,795	\$1,995
Camp Jabulani (AI)	\$1,830	\$2,740
Lion Sands		
• River Lodge (FI)	\$1,870	\$2,935
• Ivory Lodge (FI)	\$3,555	\$5,450
Sabi Sabi		
• Little Bush Camp (FI)	\$1,880	\$2,950
• Bush Lodge (FI)	\$2,015	\$2,270
• Selati Lodge (FI)	\$2,095	\$2,350
• Earth Lodge (FI)	\$3,075	\$3,330
Savanna Tented Camp (FI)	\$1,950	\$3,060
Shumbalala Private Lodge (AI)	\$1,995	\$3,010
Rattray's of Mala Mala (AI)	\$2,195	\$3,200
Londoloz		
• Varty Chalets (FI)	\$2,365	\$3,545
• Founders Chalets (FI)	\$2,505	\$3,895
• Tree Camp (FI)	\$3,595	\$5,595
• Pioneer Camp Cottages (FI)	\$3,595	\$5,595
• Private Granite Camp (FI)	\$3,905	\$5,995
Leopard Hills (FI)	\$2,605	\$2,605
Singita Boulders & Ebony Lodge (FI)	\$3,995	\$4,900
Singita Lebombo (FI)	\$4,085	\$4,085
Royal Malewane (FI)	\$4,175	\$6,285

*Price includes 2 nights accommodation at your selected camp, morning and afternoon game drives, all meals, return transfers. Excludes airfares.

Savanna Private Game Reserve

Savanna Private Game Reserve is small and intimate with only four luxury suites, three executive suites with private plunge pools and one two bedroom suite with lounge and dining room. The suites all combine the romance of a tented roof with the sophistication of a permanent structure. They all have indoor and outdoor showers, fully stocked mini-bar, in room safe, air conditioning and private verandah. Specially designed game viewing vehicles and highly trained guides with vast knowledge of the African bushveld, take guests on close and intimate encounters with a large variety of wildlife.



Savanna Private Game Reserve

Royal Malewane

Multi award-winning Royal Malewane, situated in the Thornybush Game Reserve, offers the ultimate in luxury and privacy, a balance of spectacular game and wildlife viewing, extensive flora and never-ending African skies. This exclusive getaway combines outstanding five star plus accommodation, world-class cuisine and exceptional service plus intimate game experiences and close sightseeing of the Big 5. Six Suites that accommodate two guests all have wooden decks, rim-flow pool and thatched gazebos.



Royal Malewane

Leopard Hills

Leopard Hills is situated in the Sabi Sands private game reserve bordering the world famous Kruger National Park. This 5 star luxury lodge offers fine dining with outstanding cuisine and an extensive wine cellar. Each of the 8 luxurious, generously spacious, glass fronted and air-conditioned suites have their own private rock plunge pool with spectacular views over the surrounding bushveld, waterhole and beyond. Enjoy morning and afternoon game drives and walking safaris with professional, knowledgeable rangers.



Leopard Hills

Mala Mala

Mala Mala has been South Africa's best known safari camp for many years. Accommodation is 5 star, with exceptional service, along with renowned attention to detail. It is one of the most reliable locations to see the Big 5. Relax in the unpretentious elegance and style of one of the finest safari experiences in Africa. Mala Mala offers exceptional accommodation under traditional thatched roofs with spectacular views, air-conditioning and en-suite bathrooms. Enjoy sumptuous meals in the traditional boma sharing stories of the day's thrilling game activities.



Mala Mala

Singita – Boulders Lodge

Singita has one of the best reputations for 5 star accommodation and service. Boulders consists of 9 lavish suites that combine contemporary furnishings with antiques and African fine art. The luxury air-conditioned suites consist of sumptuous bathrooms, indoor and outdoor showers, an expansive living area with double-sided fireplace, mini-bar and fridge, private wooden leisure decks with a private heated plunge pool. Guests can enjoy wrap-around views from most parts of the natural stone lodge, and the lookout deck offers the perfect spot from which to observe wildlife drawn to the Sand River.



Singita - Boulders Lodge



Honeyguide Mantobeni Camp

Honeyguide Mantobeni Camp

This tented camp is designed to reflect Hemmingway's Africa. The 12 large Nehru-styled ensuite tents are comfortably furnished with kingsized beds and soft leather couches. All meals, refreshments, game drives and walking trails are included in the rate and a full bar service is available. Honeyguide operates ecosafaris in a vast private concession area by open game viewing vehicles or on foot under the guidance of armed and experienced rangers. Game visiting the nearby watering hole can be seen from the swimming pool deck adjoining the reception areas.



Sabi Sabi Bush Lodge

Sabi Sabi Bush Lodge

Sabi Sabi Bush Lodge is a luxurious safari escape set in the heart of the Sabi Sabi bushveld overlooking a waterhole and an African plain. For decades Bush Lodge has been Sabi Sabi's flagship lodge, famed for its warmth, vibrancy and legendary hospitality. It consists of 25 spacious air-conditioned, thatched-roofed suites all beautifully appointed with exquisite ethnic decor. The en-suite bathrooms feature alfresco as well as glass-fronted indoor showers. Huge viewing decks are the ideal setting to relax while spotting game, birdwatching, or cooling off in the filtered pools.



Sabi Sabi Little Bush Camp

Sabi Sabi Little Bush Camp

Nestling in the shade on the banks of the Msuthlu River Little Bush Camp features six luxury suites, each with a private viewing deck overlooking the riverbed. Each is decorated in contemporary African design complete with luxury furnishings, full en-suite, indoor and outdoor showers and airconditioning. Thatched roofs, mosquito nets, and beautiful wooden finishes complete the picture of an exclusive safari getaway. This jewel of the South African bushveld boasts all of the features associated with an exceptional safari lodge - beautiful setting, excellent cuisine and abundant wildlife.



Lion Sands River Lodge

Lion Sands River Lodge

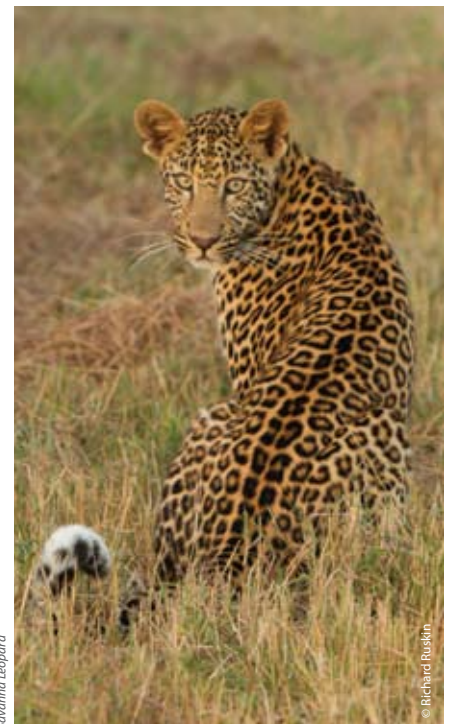
River Lodge has been built on the banks of the Sabie River, and faces due east, catching the sun as it rises over the Kruger National Park. Hosted by a family of staff that make it feel like home away from home, the lodge is about spirit, warmth and nature. There are 18 luxurious thatched bedrooms with king-sized beds, en-suite bathroom, outdoor & inside shower, wooden viewing deck and mini-bar. The bedroom area is air-conditioned with an overhead fan. All rooms have mini-bar & telephone access. The rooms are linked to all areas by raised wooden walkways.



Makalali

Makalali

Offering exceptional value, Makalali consists of four exclusive camps situated on the banks of the Makhutswi River, each with a uniquely designed swimming pool, open air boma and an enclosed dining and lounge area. Each camp has six luxury suites with en-suite bathroom, outdoor shower, fireplace and a raised private timber viewing deck. Rooms are individually decorated in African styles with sculptured metalwork lamp shades, taps and ceramic basins. Dining at Makalali is a culinary adventure, with a combination of regional African cuisine and a great selection of drinks.



Savanna Leopard

© Richard Ruskin



Ostrich

© Richard Ruskin



African Elephant

© Richard Ruskin

Kuname River Lodge

Kuname River Lodge is a small, exclusive, luxury safari lodge set in pristine African bush, in the Karongwe Private Game Reserve. Accommodation is in five private, luxury chalets, all decorated in an elegant African style. The en-suite bathrooms include an outdoor shower as well as a luxurious outdoor bath. Bordered by the towering Drakensberg escarpment on the west and set in game-rich, lush, riverine vegetation, Kuname offers a variety of breathtaking views, diverse landscapes and some excellent game-viewing opportunities all at exceptional rates.



Kuname River Lodge

Lukimbi Safari Lodge

Lukimbi is located within the southern sector of the world renowned Kruger National Park, in a large exclusive private concession of prime bushveld (no other vehicles permitted) and is a photographers' delight, both inside the surrounds of the lodge and out in the beckoning bush. Raised walkways lead guests to sixteen spacious suites, all combining luxury and modern African décor including private decks facing the river with stunning views. All suites are air-conditioned, have safes, mini bars, and tea and coffee making facilities. Walking safaris are a highlight at this lodge.



Lukimbi Safari Lodge

Londolozi Tree Camp

5 star Tree Camp offers elegance and simplicity in every detail and is a showcase of African excellence, from the private swimming pools and contemplation decks, the Ralph Lauren wallpaper to the chocolate coloured plaited beds. It is most famous for its leopard sightings and its bush setting. Guests can spend lazy afternoons on their decks, champagne in hand as they survey the ancient landscape, with elephants and other magnificent bushveld wildlife feeding and drinking from the river below. Game viewing by open 4 wheel drive vehicles is with experienced and personable rangers.



Londolozi Tree Camp

Idube

Idube Private Game Reserve is situated in the Sabi Sand Game Reserve in the heart of South Africa's premier wildlife conservation area. It has 10 individually decorated en-suite chalets set amongst green lawns and shady trees, each with air-conditioners, outside showers, overhead fans, high ceilings, mosquito screens and private wooden decks. Game, including the Big 5, is viewed up close from open Landrovers, or seen on guided walks. Idube is dedicated to giving guests a genuine experience in a friendly, relaxed atmosphere.



Idube

Umlani Bush Camp

Accommodating a total of sixteen guests, this classic African safari camp provides understated luxury in traditional reed and thatch huts, enhanced by the romance of operating without electricity. Each of these huts has en-suite facilities - with open air bush showers fuelled by wood fires. It is a lovely place to 'get back to nature' by relaxing in the warm atmosphere of candlelight and oil lamps. Game drives are conducted in open Land Rovers, with guided bush walks and tracking game on foot with highly experienced rangers and trackers.



Umlani Bush Camp



Motswari

Motswari

One of South Africa's jewels nestled within the Timbavati Nature Reserve, this family-owned and operated safari lodge prides itself on its warm atmosphere and luxurious African safari lodge accommodation. Motswari consists of fifteen luxury en suite bungalows with air-conditioning. All the rooms have magnificent bush and river views. The lodge offers a traditional open-air boma, a spacious lounge and bar overlooking a beautiful dam, an art gallery and swimming pool. This area is known for its predator populations, supporting one of the highest densities of lion in Africa.



Camp Jabulani

Camp Jabulani

Camp Jabulani in Kapama Game Reserve is home to Jabulani the elephant and 12 Zimbabwean elephants, all rescued by owner, Lente Roode. Camp Jabulani offers luxurious accommodation in 6 elegant and spacious suites each with its own en-suite bathroom. The comfortable beds are all fitted with pure cotton sheets and the bathroom features a bath and an outdoor glass-enclosed shower. Each suite has a private plunge pool. There is also a spa for a soothing massage. One of the great highlights is the chance to take an elephant back safari.



Shishangeni Private Lodge

Shishangeni Private Lodge

Situated on the Mpanamana Private Concession of the Kruger National Park is Shishangeni offering five star accommodation comprising 22 individual chalets, all luxuriously equipped with en-suite bathrooms, outside shower, air conditioning, telephone, mini-bar and timber deck. Here you can dine on traditional cuisine around a roaring boma fire under the stars of the African sky and enjoy vivid storytelling by the local community including many rituals that are still enacted today - forming part of the traditional Shishangeni legend.



Ngala Tented Camp

Ngala Tented Camp

Ngala Tented Camp makes for an exciting wildlife safari adventure. Flickering lanterns, starlit skies, and the sounds of the animals around you is flawlessly combined with sophisticated elegance. Ngala Tented Camp consists of 6 luxury tented suites with outdoor showers, deep baths, overhead fans, air conditioning and electric blankets to keep out the evening chill. Indulge in luxurious comfort under a canvas tent perched on raised platforms. The African wilderness at Ngala Private Game Reserve, South Africa, offers spectacular views and fantastic wildlife sightings.



Camp Shonga

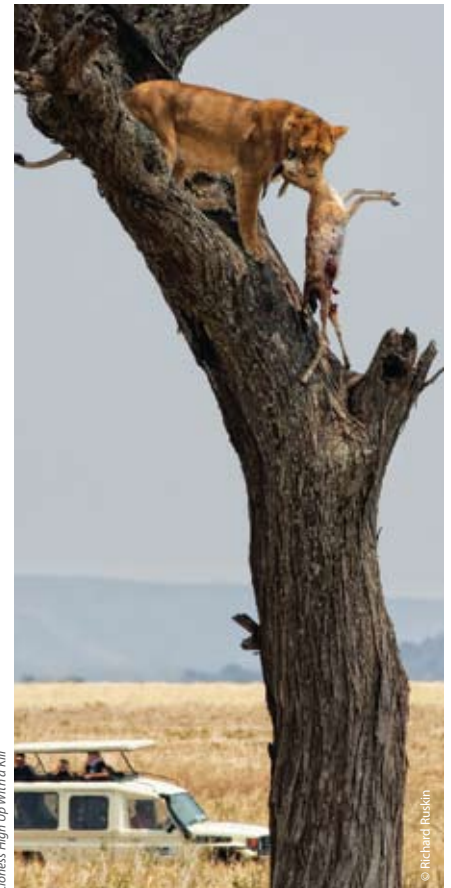
Camp Shonga

Camp Shonga is a small intimate bush retreat built in the foothills of the Lebombo Mountains, offering good accommodation with views over the African bushveld as far as the eye can see. Camp Shonga's emphasis is on guests' participation in a choice of select environmental awareness programmes. The public areas at this safari lodge consist of a lounge, indoor and outdoor dining area and a splash pool. The camp is powered by a generator and battery system. Power points are available in the rooms for chargers, electrical shavers and hairdryers.



Dwarf Mongoose

© Richard Ruskin



Lioness High Up With a Kill

© Richard Ruskin