

OTHER BOTSWANA LODGES

Botswana also has many independent lodges that offer different standards and styles without compromising the quality of the experience. The selection of lodges below have been chosen specifically for their quality of guides, their location, the standard of food and amenities and the high level of service offered. They come highly recommended as good value for money.

&BEYOND

Prices pp per night from: TWIN

| | |
|------------------------------------|-------|
| Nxabega Okavango Safari Camp (FI) | \$505 |
| Sandibe Okavango Safari Lodge (FI) | \$505 |
| Xaranna Tented Camp (FI) | \$695 |
| Xudum Delta Lodge (FI) | \$695 |

PRICE PER PERSON FROM: \$505

PRICE INCLUDES:

- Three meals daily
- Soft drinks, house wines, local brand spirits and beers, teas and coffees, refreshments on game drives
- Scheduled safari activities
- Emergency medical evacuation insurance
- Laundry

CHOBE NATIONAL PARK

Prices pp per night from: TWIN

| | |
|-------------------------|-------|
| Chobe Safari Lodge (AI) | \$360 |
| Chobe Marina Lodge (AI) | \$435 |
| Muchenje Lodge (FI) | \$450 |
| Kubu Lodge (AI) | \$500 |
| Chobe Game Lodge (FI) | \$555 |
| Chobe Chilwero (FI) | \$755 |

PRICE PER PERSON FROM: \$360

PRICE INCLUDES:

- All meals
- Drinks (tea and coffee only at Kubu Lodge, all drinks at Muchenje Lodge, local spirits and wines plus complimentary mini-bar at Chobe Game Lodge and Chobe Chilwero, drinks own expense at Chobe Marina Lodge)
- Game activities (Muchenje Lodge unlimited game activities, Kubu Lodge and Chobe Marina Lodge 2 activities per day, Chobe Game Lodge and Chobe Chilwero scheduled activities)
- Park fees
- Transfers to and from Kasane Airport
- Laundry service (except Chobe Marina Lodge)

Chobe Chilwero

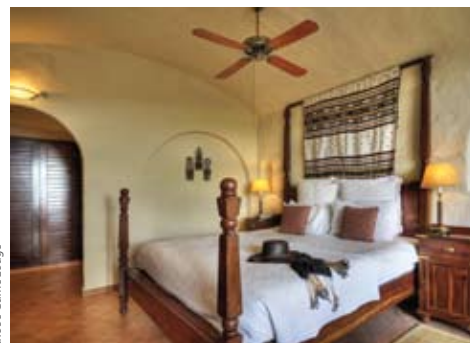
Chobe Chilwero borders Chobe National Park, home to the World's largest remaining population of elephants. This is a luxurious lodge with just 15 guest cottages, each with their own ensuite bathroom with indoor and outdoor showers, private garden with hammock, and private balcony. Guests can relax in the split-level swimming pool, unwind with a pampering session in the spa or enjoy the gourmet food. Activities include guided game drives in open-sided 4X4 vehicles or a water safari on specially adapted motorboats.



Chobe Chilwero

Chobe Game Lodge

Chobe Game Lodge is the only lodge actually situated within Chobe National Park overlooking the Chobe River and Caprivi floodplains. The architecture is Moorish and graceful - high arches, barrel-vault ceilings and tiled floors that create an atmosphere of spaciousness and tranquility. All 47 rooms are decorated with original African carvings and paintings. Chobe Game Lodge offers guests luxurious accommodation in fully air-conditioned river-facing rooms.



Chobe Game Lodge

Chobe Safari Lodge

Chobe Safari Lodge is situated in Kasane on the banks of the Chobe River and shares a border with Chobe National Park. Chobe Safari Lodge offers tranquil and secluded accommodation in an area rich with diverse wildlife. The accommodation comprises safari rooms, river rooms and thatched rondawels. All the rooms are individually decorated and have en-suite bathroom facilities with great views of this unique area. The lodge has been recently renovated; matching a beautifully appointed lodge with spectacular scenery and game viewing nearby.



Chobe Safari Lodge

Sandibe Okavango Safari Lodge

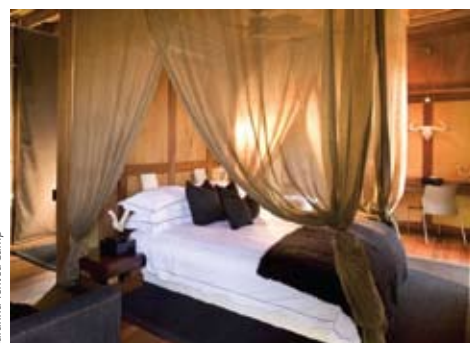
Sandibe Okavango Safari Lodge is set in a private concession of 8 000 hectares to the southeast of the Moremi Wildlife Reserve in the centre the Okavango Delta. The Lodge consists of 8 luxurious guest cottages with overhead fans and the outdoor shower makes for great stargazing. Take in the sun on raised private decks with great views over the Delta and then cool off in the swimming pool. Sandibe Okavango Safari Lodge is situated near a permanent channel of the Delta, offering a water and wilderness experience with the excitement of viewing big game on land.



Sandibe Okavango Safari Lodge

Xaranna Tented Camp

Xaranna Okavango Delta Camp is set in a private wilderness concession of 25 000 hectares to the southeast of the Moremi Wildlife Reserve. The Camp enjoys luxurious solitude on its own Delta island and is a delightful, airy camp with just nine sleek ensuite safari tents that combine canvas and bleached timber. All the tents have sweeping views across the channels. Each tent has a romantic sala, private plunge pool, indoor bathtub and al fresco shower. Guests can experience guided walking safaris, game drives and traditional mokoro excursions.



Xaranna Tented Camp



Chief's Camp



Stanley's Camp



Shinde Camp



Kanana Camp



Okuti Camp

Chief's Camp

Chief's Camp is a luxury bush lodge featuring 12 ensuite tented pavilions tucked away in a jackalberry and sausage tree woodland, designed for ultimate privacy and comfort with a private game viewing deck. There is a communal decked living room with stunning views over the floodplains, while the dining area surrounds a fire pit on the very edge of the Pajio plains. Situated on Chief's Island in the exclusive Mombo Concession it is an area known for its exceptional predator sightings, which can be seen from open 4 X 4 vehicles or by mokoro (dug-out canoe) along the narrow Delta channels.

Stanley's Camp

Stanley's is a classic tented camp with just eight tents built around an imposing sausage tree on a private concession overlooking the Okavango floodplains. This intimate camp is gathered around a large sitting and dining area which affords magnificent views over the floodplains. Each tent boasts a traditional ceiling fan and is individually designed, but all have a classic and understated elegance that harks back to the explorers and colonialists of the 19th century. Large wooden decks provide private areas for guests to relax in hammocks or enjoy cocktails before dinner.

Shinde Camp

Nestled on a lush palm island in the heart of the northern Okavango Delta, Shinde is an intimate camp located on the edge of Shinde lagoon, teeming with animal and birdlife. The main camp's unique tree house made of a multi-tiered raised dining/lounge area under canvas, set amongst the shade of ebony and mangosteen, compliments the atmosphere of this original safari camp. Shinde comprises of eight twin bedded classic safari tents each with en-suite bathrooms, hot and cold running water and flush toilet.

Kanana Camp

Kanana Camp is located in the remote inner reaches of the Delta and features eight deluxe luxury tents with the common facilities of the camp built on stilts, encircling a massive ancient fig tree, ensuring great views of the floodplains. While game viewing in 4x4 vehicles is very popular, game viewing on foot or gliding silently through the Delta by mokoro are the highlights in this area. Fishing and visits to the local heronry are also available.

Okuti Camp

This delightful camp lies alongside the Maunachira River, which flows through the Xakanaxa Lagoon within the world renowned Moremi Game Reserve. This luxury camp has been designed in the African village style and is a delightful refuge in the Moremi Game Reserve. Okuti is intimate, catering for only 18 guests at any one time. Accommodation is luxurious and includes an en suite bathroom as well as an outdoor shower. Activities on offer are 4x4 game drives, motorboat safaris and bird watching at the heronry.

SANCTUARY LODGES

Prices per person from: **TWIN**

| | |
|---------------------|---------|
| Stanley's Camp (FI) | \$685 |
| Baines Camp (FI) | \$825 |
| Chief's Camp (FI) | \$1,215 |

PRICE PER PERSON FROM: \$685

PRICE INCLUDES:

- Accommodation based share twin room
- All meals and beverages (alcoholic or non-alcoholic with the exception of premium brands)
- All game viewing activities (excludes the Elephant Activities at Stanley's Camp & Baines' Camp)
- Park fees
- Laundry services

K&R & DOWNEY'S BOTSWANA

7 Days / 6 Nights

This package offers you an amazing 6 night safari with your own combination of three spectacular, well-located camps; Shinde Camp, Kanana Camp, and Okuti Camp. Ideal for families, these offer luxury tented accommodation, great food and a wide choice of game activities. The package includes flights ex-Maun and is virtually all-inclusive.

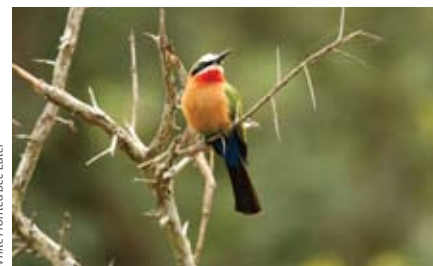
PRICE PER PERSON FROM:

Low Season \$2,995

High Season \$4,765

PRICE INCLUDES:

- Accommodation based share twin room
- All meals
- All flights from/to Maun and between camps
- All game viewing activities offered at the camps
- All local drinks (South African wines and spirits)
- Park entrance fees and laundry



White-fronted Bee-eater