

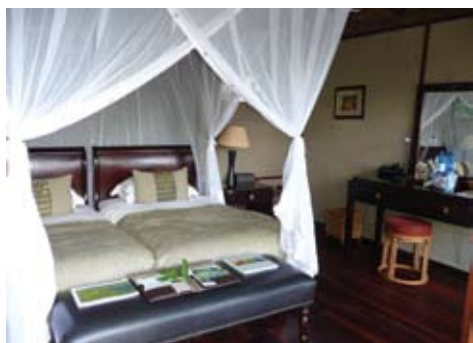
These wilderness camps are small and intimate, and offer the best in service and comfort with some of the best guides in Southern Africa. Located in the best concessions to maximise the game viewing the Classic Camps are generally tented, although a few are lodges built from permanent structures whilst the Premier Camps offer a higher level of service and comfort. All have superb facilities and accommodation.



Zarafa

### Zarafa

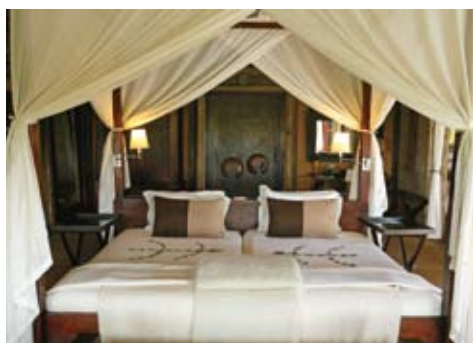
Zarafa Camp has four luxuriously appointed and arguably the largest 'marguis style' tents in Africa - made up of three tented rooms in one. Each of the spacious tented rooms is positioned along the edge of the forests to take advantage of the spectacular view over the floodplains and savannas. Complimentary SLR camera equipment is available for the guests' use in each tent. Meals are generally table d'hôte and include a light breakfast at dawn, a hearty brunch, afternoon tea and snacks, rounded off with a sumptuous dinner in the evening.



Duma Tau

### Duma Tau

Duma Tau is situated in Linyanti, in a private concession bordering Chobe National Park. This luxury camp is built around shady mangosteen trees overlooking a large hippo filled lagoon. The camp is renowned for its high concentrations of elephant and outstanding wildlife. The property accommodates twenty guests in thatched canvas cottages all beautifully appointed with private facilities. There is a dining room, lounge, swimming pool and a special guest bathroom with a fantastic view.



Kings Pool

### Kings Pool

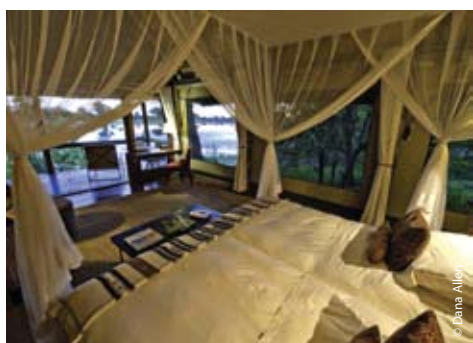
Kings Pool is located on a private reserve in the Linyanti area. The camp overlooks the Kings Pool Lagoon and the Linyanti River. This camp is well-known for its herds of elephant as well as a huge variety of antelopes and predators. Kings Pool Camp has nine well-appointed canvas and thatch tents. Each has a large bedroom area, lounge, private plunge pool and 'sala', as well as a spacious en-suite bathroom. The lounge, dining room and public areas are on expansive raised decks. There is also a communal pool and an open-air 'kgotla' for dining under the stars.



Selinda

### Selinda

Selinda Camp is built on a shady island overlooking the waters of the dramatic Selinda Spillway. With its large, game-rich floodplains Selinda Camp offers a unique wildlife experience. Each tent has en-suite facilities, including a stone bath. The bathroom is uniquely "open air" with lots of natural light, yet is screened and virtually insect-proof. The tents are spacious and beautifully appointed with furniture and features that have been collected from around Africa. Four-poster beds, mosquito nets and overhead fans are standard at Selinda Camp.



Savuti Camp

### Savuti Camp

Savuti Camp lies on the Savute Channel in Northern Botswana and enjoys 'front-row' seats to view the abundant game that congregates in the area. This intimate camp's en-suite accommodation consists of seven large walk-in tents that are raised off the ground and face onto the Savute Channel. From the camp's thatched dining area, a plunge pool and large viewing area with fire pit extend outwards on raised wooden decks, providing a wonderful view of the Savute Channel and its wildlife.

## PREMIER CAMPS

5 Days / 4 Nights

PRICE PER PERSON FROM: \$5,785\*

### Okavango/Moremi Area

Abu\* (FI)

Mombo\* (FI)

Little Mombo\* (FI)

Jao Camp (FI)

Vumbura Plains (FI)

### Linyanti/Savuti

Kings Pool\* (FI)

Zarafa Camp\* (FI)

## CLASSIC CAMPS

5 Days / 4 Nights

PRICE PER PERSON FROM: \$3,635\*

### Linyanti/Savuti

Duma Tau\* (FI)

Savuti Camp\* (FI)

Selinda Camp\* (FI)

### Okavango/Moremi Area

Tubu Tree Camp (FI)

Chitabe Camp (FI)

Chitabe Lediba (FI)

Kwetsani Camp (FI)

Little Vumbura\* (FI)

Xigera Camp (FI)

Jacana Camp (FI)

Duba Plains\* (FI)

Seba Camp (FI)

NOTE: You can choose 1 camp for 4 nights or 2 camps for 2 nights each

\*SUPPLEMENT APPLICABLE

### Makgadikgadi National Park 3 Days/2 Nights

PRICE PER PERSON FROM:

Camp Kalahari (FI) \$2,365

Jack's Camp (FI) \$4,105

San Camp (FI) \$3,435



African Fish Eagle

© Richard Ruskin



Impala

© Richard Ruskin

## Vumbura Plains Camp

Vumbura Plains Camp lies in the extreme north of the Okavango Delta, on the edge of a large floodplain. It is located in an area with a wide variety of habitats and animal and bird species, many of which guests have the opportunity to see from the camp. Each large, luxurious room is raised off the ground on wooden decks and comprises a bedroom, lounge, shower and full en-suite bathroom with outdoor showers. Rooms are open on three sides, and each have a plunge pool and 'sala' - a comfortable area to relax and enjoy the floodplain.



Vumbura Plains Camp

## Xigera Camp

Nestled in a magnificent riverine forest, Xigera Camp is a true Okavango Delta experience. Xigera Camp consists of ten luxuriously furnished tented rooms - each with en-suite facilities and an outdoor shower. Raised on wooden platforms and walkways, each tent offers superb views of the seasonal Okavango Delta floodplains and the lagoon. This is a wonderful 'wet' camp and is renowned for its mokoro (dugout canoe) trips. The feeling of living in the midst of a riverine forest is one of the features of Xigera Camp.



Xigera Camp

© Dana Allen

## Tubu Tree Camp

Tubu Tree Camp is a small camp built on the western side of Hunda Island, in the Okavango Delta's Jao Concession. Usually a water-inundated area during the floods, Hunda Island is the largest stretch of dry land in the area. Tubu Tree Camp is built in traditional style, with five en-suite tents on raised wooden platforms - each with picturesque vistas of the floodplains from a private deck. The main dining, lounge areas and pool are also on raised platforms. Tubu Tree Camp has an outdoor public area which lies under the canopy of a large marula tree.



Tubu Tree Camp

© Dana Allen

## Duba Plains

Duba Plains Camp lies in the most remote reaches of the Okavango Delta, in an area renowned for the endless conflict between prides of lions and the herds of buffalo which sustain them. It is an unobtrusive camp surrounded by expanses of seasonally flooded plains and shaded by tall ebony, sycamore fig and mangosteen trees. The camp consists of six spacious tents with en-suite bathrooms, outside showers and verandas with panoramic vistas. The thatched lounge, dining and bar areas are raised, along with the pool, on wooden platforms to appreciate the breathtaking views.

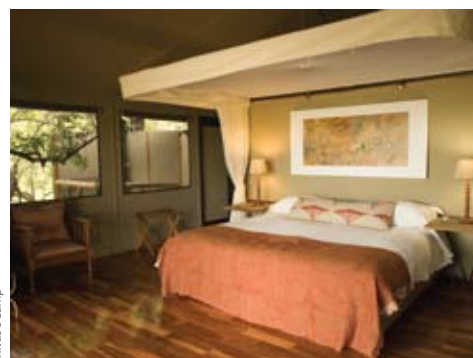


Duba Plains

© Dana Allen

## Chitabe Camp

Chitabe Camp is situated in a private concession area on a beautiful island in the south-east of the Okavango Delta. Chitabe Camp's eight spacious Meru-style tents are built on elevated wooden decks amongst the trees of the Okavango Delta. Each tent has twin beds, en-suite facilities and an indoor as well as an outdoor shower. The thatched dining area, bar and lounge area are built on raised decks to provide superb views across the Okavango Delta floodplain. There is a pool that allows guests to cool off in the heat of the day.



Chitabe Camp



Mombo Camp

## Mombo Camp

Located in the Mombo Concession on Chief's Island in the heart of the Okavango Delta, the sheer numbers and variety of wildlife all year round defy description. Mombo Camp, regarded as the best in the Delta, comprises nine spacious tents. Bathrooms are en-suite, with both indoor and outdoor showers. All the rooms, the sala, long veranda and lounge area all take advantage of the very best views that the Okavango Delta has to offer. Mombo Camp's main living and dining areas are under thatch, and a boma makes for a delicious dinner under the stars. There is also a plunge pool in which to relax.



Jao Camp

## Jao Camp

Jao Camp is located on a large, remote island in a private concession, bordering the Moremi Game Reserve in the heart of the Okavango Delta. With varied habitats ranging from waterways and lagoons to dry Kalahari grasslands and open floodplains, Jao Camp can offer both land and water experiences. Jao Camp has nine spacious, beautiful tents, each individually handcrafted. This luxurious camp is raised on wooden decks and has 9 beautifully appointed twin-bedded canvas and thatched ensuite rooms, all of which have superb views overlooking the floodplain.



Jack's Camp

## Jack's Camp

Jack's Camp is located on a private concession amid the desert and moon-like landscapes of the Kalahari Desert and the Makgadikgadi Pans – remnants of the once great Lake Makgadikgadi. Ten spacious, stylish canvas tents with en-suite bathrooms and indoor and outdoor showers have been fashioned in classical style and are set into a palm grove creating an oasis of civilization amongs the African bushveld. Persian rugs underfoot and cool cotton sheets form a striking contrast with the rugged wilderness that can be viewed from the comfort of one's own verandah.



San Camp

## San Camp

San Camp is set in a sparse forest of fan palms, in grasslands on the edge of Ntwetwe Pan, overlooking the awesome Makgadikgadi Pans National Park. San Camp has six Meru-style tents, spread out quite widely, and overlooking the pan. These are cream-coloured to fit in with the area and are comfortable, with an en-suite bathroom with a private shower and flush toilet. In the bathroom is an extensive range of toiletries. There is no electricity at San Camp which fits in well with the remoteness and dramatic location of the camp.



Kalahari Plains Camp

## Kalahari Plains Camp

Kalahari Plains Camp, in the Central Kalahari Game Reserve, offers one of the most remote experiences in Africa. This camp is beautifully placed within the Kalahari Desert biome, a place famed for its outstanding wildlife - including the legendary black-maned Kalahari lions. It comprises 10 en-suite canvas units each with a sleep-out above. The main area consists of a lounge and dining area with an inviting swimming pool and deck area. The tents and main area are all raised off the ground to catch the breeze and take in the sweeping views. Solar power provides all the electricity in the camp.



Black-Faced Vervet Monkey

© Richard Ruskin



Little Bee-Eater

© Richard Ruskin